

GOLFLIFE

**GLM DESIGNER
TOOL GUIDE**

GET INTOUCH
golflifemetals.com
jon@golflifemetals.com



GLM CUSTOM MARKER

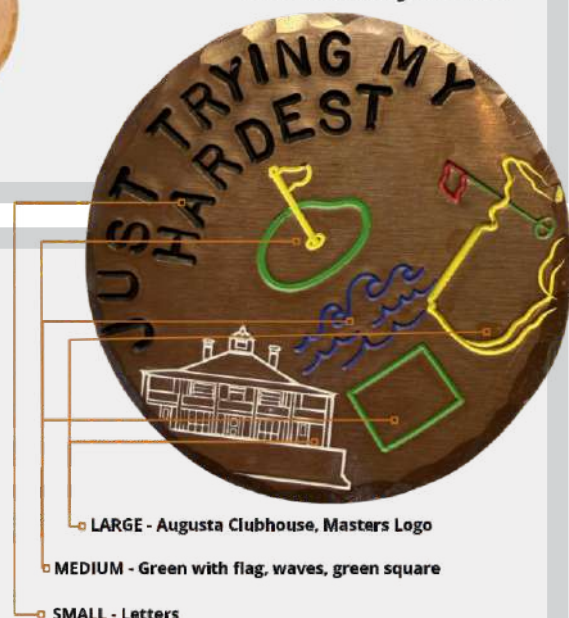


2 WAYS TO CREATE YOUR CUSTOM MARKER:

1 - Use the GLM Design Tool

Use the GLM Design Tool by logging in, placing your stamps where desired without changing their size, selecting your preferred colors, adding any text or additional icons, counting your total stamps (letters = 1, small icons = 1, medium icons = 2, large icons = 4), choosing your finish (Torched for a dark look or Plain for a shiny finish), then save your design, add it to cart, and complete your order.

2 - Print the last page of this
workbook, follow the instructions
and sketch yourself.



▶ STAMP SIZES

SMALL STAMPS



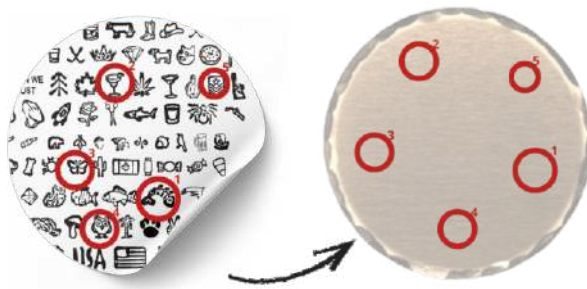
MEDIUM STAMPS



LARGE STAMPS



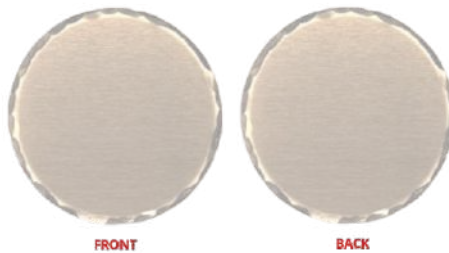
SKETCHPAD



2 WAYS TO CREATE YOUR CUSTOM MARKER:

Carefully circle your desired stamps from the SMALL, MEDIUM, and LARGE stamps, number them in your preferred order, and then place each one on the marker canvas to show exactly how you want your final custom marker to look, as illustrated in the image below.

SKETCHPAD



FRONT

BACK

2 WAYS TO CREATE YOUR CUSTOM MARKER:

1 - Use the GLM Design Tool

2 - Print the last page of this workbook, follow the instructions and sketch yourself.



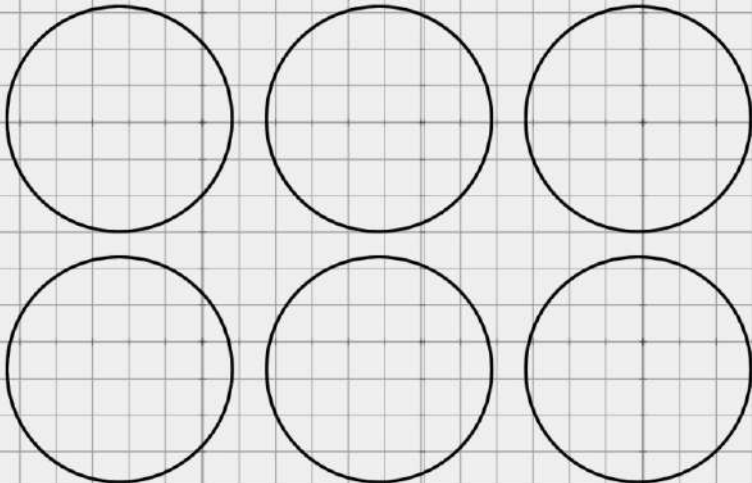
- WARNING -

The Black Course Is An Extremely Difficult Course Which We Recommend Only For Highly Skilled Golfers

Name :

Order # :

You can also use the below worksheet to sketch your ideas and gives us notes.



NOTES :

COLOR LEGEND:

B - BLACK
BL - BLUE
LB - LIGHT BLUE
W - WHITE
R - RED
Y - YELLOW
O - ORANGE
P - PURPLE
PI - PINK
LP - LIGHT PINK
BR - BROWN

THANK YOU!



Some Popular designs to draw inspiration:

